

PRODUCT CATALOG

DESIGNED FOR YOUR SUCCESS



VIA Labs, Inc.

2026/5

CONTENTS

USB-IF KGD / KGH / KGS

KNOWN-GOOD-DEVICE	6
KNOWN-GOOD-HUB	6
KNOWN-GOOD-PD SOURCE	6

USB4, PCON/MST, USB-C

USB4 DEVICE	7
PCON CONTROLLER	7 ~ 8
CC CONTROLLER	8
DP ALTERNATE MODE	9 ~ 10
ELECTRONIC MARKER	11
DATA SWITCH	11
CROSSBAR SWITCH	12
RE-DRIVER	12

USB HOST, HUB, DEVICE

HOST	13
HUB	13 ~ 15
DEVICE (SATA, AUDIO)	15 ~ 16

INDUSTRIAL-GRADE

HUB	17 ~ 18
-----	---------

ABOUT VIA LABS, INC.

VIA Labs, Inc. (VLI), a subsidiary of VIA Technologies, is an industry-leading provider of advanced USB and DisplayPort connectivity solutions. The 2026 product catalog marks a strategic expansion of our portfolio, featuring new industrial-grade USB hub controllers alongside optimized iterations of our highly successful DisplayPort MST and PCON lines. We have also a new generation of USB3 hub equipped with native USB-C support. Engineered for versatility, **VLI** technology drives a wide array of applications, seamlessly supporting everything from host systems to edge peripheral devices. With certified USB4®, Power Delivery, and DisplayPort controllers, **VLI** delivers end-to-end, in-house connectivity encompassing Data, Power, and Video. Designed for flawless interoperability, these high-value solutions converge to create a powerful, unified platform.

威鋒電子 (VIA Labs, Inc., VLI) 為威盛集團之子公司，是業界領先的USB與DisplayPort連接解決方案供應商。2026年產品型錄象徵我們產品組合的策略性擴展，不僅推出全新工業級USB Hub控制晶片，也持續優化廣受市場肯定的DisplayPort MST與PCON產品線，同時帶來新一代原生支援USB-C的USB 3 Hub解決方案。

威鋒電子的技術以高度靈活性為核心設計理念，廣泛應用於多元場景，從主機系統到各類邊緣周邊設備皆能無縫整合。憑藉經認證的USB4®、Power Delivery和DisplayPort產品，威鋒提供涵蓋資料、電力與影像的端對端自主研發連接方案，完美串連資料、電源、影像三項功能。這些高價值解決方案以優異的互通性為基礎，進一步整合為一個強大且無縫整合的連接平台。

VL716



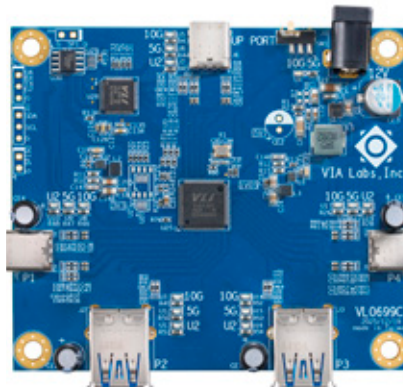
VL716 Evaluation Board
 The World's First Single-Chip Native USB-C to SATA Bridge to Achieve USB-IF Certification

VL811+



VL811+ Evaluation Board
 The World's First USB3 Hub to Achieve USB-IF Certification

VL822T



VL822T Evaluation Board
 The latest USB-IF Certified SuperSpeed USB 10Gbps/5Gbps Hub

VP302
 (15W, 18W, 27W)



VP302 Evaluation Board (15W, 18W, 27W)
 The World's First USB-IF Certified PD 3.0 with PPS Power Brick

VL832

FCCSP 10x10mm



USB4 End Point Device

Integrated SuperSpeed USB 10Gbps Hub
 Integrated USB Billboard
 Supports HID Buttons
 HW Support for Digitally Signed Firmware (256-bit ECDSA)
 DisplayPort 1.4 Support
 * 4-Lane HBR3@USB4 Tunneled Mode
 * 2-Lane + USB / 4-Lane UHBR10@10Gbps DP Alt-Mode
 Second I2C slave support for IOT application
 Earned USB4 Device Certification TID# 10033
 Support PortSense™

VL610 / VL610D

QFN100 10x10mm

DP 2.1 HBR3 to HDMI 2.1 MST Hub

DP 2.1 HBR3 RX
 Up to Three Video Outputs:
 1x HDMI 2.1 FRL TX;
 1x DP++ or HDMI 2.1 FRL TX;
 1x DP++ or HDMI TMDS TX (VL610 Only)
 Max Resolutions: 1x8K60/4K240, 2x4K120/144, or 3x4K60
 USB Billboard or I2C FW Update
 Secure FW Update
 DP 2.1 Source-controlled Mode/ Autonomous Mode
 Logo Display for Defined Events

VL605 / VL605D

QFN68 8x8mm



USB-C to HDMI 2.1 Protocol Converter

DP 2.1 HBR3 to HDMI 2.1 Protocol Converter
 Integrated 2-Port USB PD 3.1 EPR Controller
 Supports DP Alt Mode & USB4 DP Tunneling w/i Charge Through
 Secure FW Update
 DP 2.1 Source-controlled Mode/
 Autonomous Mode
 Adaptive-Sync and AMD Freesync to VRR Conversion
 VL605: DP 4-lane; VL605D: DP 2-lane

VP226

DFN10 3x3mm



USB-C DFP CC Controller

Selectable USB-C Current Setting
 VCONN Switch with OCP
 Orientation Indication

 Supports USB PD Supports USB-C® Industrial-Grade Available

VL103

QFN32 5x5mm
QFN48 6x6mm



DisplayPort Alternate Mode with Auto-Standby and PD 3.2 SPR Controller

Auto-Standby for Ultra Low Idle Power
One USB-C UFP and One USB-C DRP DFP
Supports QC-to-PD Charge Through
Crystal-less and Can Share SPI Flash with VLI Hub Controller
Pin-Compatible with VL100-Q3 & VL102-Q4

VL105 / VL105H

QFN60 7x7mm
QFN48 6x6mm



DisplayPort Alternate Mode with Interchangeable DFPs and PD 3.2 SPR Controller

One USB-C UFP and Two USB-C DRP DFPs
Interchangeable USB-C DFPs
* VL105 Supports QC-to-PD Charge Through
* VL105H Supports Huawei SCP/FCP-to-PD Charge Through

VL107

QFN48 6x6mm



DisplayPort Alternate Mode with Secure FW Update Console and PD 3.1 EPR Controller

One USB-C UFP and One USB-C DRP DFP
Built-in ECDSA256 / SHA256 for Secure FW Update
Secure FW Update 3rd Party Controllers by I2C or SPI I/F
Supports USB PD 3.1 Extended Power Range

VL108

QFN60 7x7mm
QFN48 6x6mm



DisplayPort Alternate Mode and 3-Port PD 3.1 EPR Controller

One USB-C UFP and Two USB-C DRP DFPs
Interchangeable USB-C DFPs
Supports USB PD 3.1 Extended Power Range
Supports D+/D- Adapter to USB PD
17 GPIOs and I2C FW Update

VL109 / VL109S

QFN60 7x7mm
QFN48 6x6mm



3-Port USB PD 3.2 EPR Controller for Docking

One USB-C UFP and Two USB-C DRP DFPs
Supports USB PD 3.2 Extended Power Range
8-CH ADC or GPIOs
20 GPIOs and I2C FW Update
VL109S for Self-powered APPs

Supports USB PD
 Supports USB-C®
 Industrial-Grade Available

VL153

WLCSP-6



Electronic Marker

Supports USB PD 3.1 & USB4 SOP' Endpoint
 Supports Thunderbolt Passive Cable VDO
 Supports VCONN Power 2.7~5.5V
 CC, VCONN1 and VCONN2 Pin Short to Vbus Protection

VL171 / VL172

QFN28 3.5x4.5mm



Crossbar Switch

4:6 Crossbar Switch
 SBU Supports for DP Alternate Modes
 Supports USB 3.2 & DP 1.4
 (VL171 supports up to DP2.1 UHBR10)
 Low Insertion Loss : -1.8dB @ 10Gbps
 VL172 supports Pin Assignment E for UFP

VL162 / VL162S

QFN28 3.5x4.5mm



USB Data Switch with CC Logic

USB 3.2 2:4 USB-C Data Switch
 UFP Mode Features USB-C Current Detection
 DFP Mode Features Settable USB-C Current
 VCONN Switch with OCP
 Low Insertion Loss : -1.4dB @ 10Gbps
 VL162 has dead battery Rd

VL181

QFN40 4x6mm



Re-driver

4 Channels Bi-Directional Linear Re-driver
 Supports Data Rates up to 10Gbps
 GPIO and I2C Control for Channel Direction
 and EQ
 Integrated Termination Networks

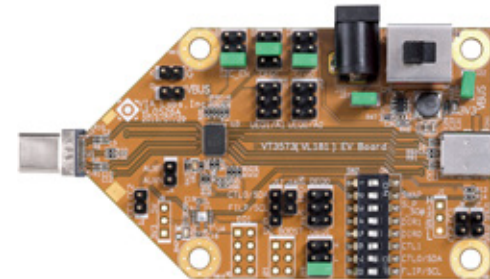
VL163 / VL163C

QFN28 3.5x4.5mm



USB Data Switch

USB 3.2 2:4 USB-C Data Switch
 Low Insertion Loss : -1.4dB @ 10Gbps
 VL163C: Attach pin & Data paths default to High-Z



VL181

⚡ Supports USB PD 📡 Supports USB-C® 🛠 Industrial-Grade Available

VL805 (4-Port)

QFN68 8x8mm

VL806 (2-Port)

QFN48 7x7mm

USB Host

xHCI 1.0
 Supports UASP & USB Debug Capability
 Windows Inbox Driver Support

VL211 (1+3Port)

QFN48 6x6mm



SuperSpeed USB 5Gbps Hub with USB PD Support (1x 5Gbps, 3x USB 2.0)

Supports USB-C & USB PD, Up to 5-Ports via TCPCI
 Supports Multi-Port Charger & DP Alt-Mode
 Optimized for Small Form Factor
 Integrated USB Billboard
 Supports HID Buttons
 Integrated DC-DC
 Management Interface & Smart Charging
 Pin-Compatible with VL210

VL122

QFN28 5x5mm (4-Port)
 QFN24 4x4mm (2-Port)



USB2 480Mbps Hub

Single Transaction Translator (STT)
 Integrated 5V to 3.3V regulator
 Management the configuration through EEPROM / SMBus
 Low Power Design

VL123

QFN28 5x5mm (4-Port)
 QFN24 4x4mm (2-Port)



USB2 480Mbps Hub

Multiple Transaction Translators (MTT)
 Integrated 5V to 3.3V regulator
 Management the configuration through EEPROM / SMBus
 Low Power Design

VL817

QFN76 9x9mm (4-Port)
 QFN56 7x7mm (2-Port)

SuperSpeed USB 5Gbps Hub

Integrated USB Billboard
 Supports HID Buttons
 Integrated DC-DC
 Management Interface & Smart Charging
 Support PortSense™ (VL817D0)

VL818

QFN88 10*10mm (4-Port)
 QFN76 9*9mm (4-Port)



SuperSpeed USB 5Gbps Hub with USB-C Support

Native USB-C DFP w/ Mux + CC Logic
 * 2x for QFN88, 1x for QFN76
 Integrated USB Billboard
 Supports HID Buttons
 Management Interface & Smart Charging
 Low Power Design
 Support PortSense™

VL822

QFN88 10*10mm (4-Port)
 QFN76 9*9mm (4-Port)
QFN56 7*7mm (2-Port)
(Industrial not support)



SuperSpeed USB 10Gbps Hub with USB PD Support

Supports USB-C & USB PD, Up to 5-Ports via TCPCI
 Supports Multi-Port Charger & DP Alt-Mode
 Integrated USB Billboard
 Supports HID Buttons
 Management Interface & Smart Charging
 Integrated Mux for UFP & 2x DFP (QFN88)
 Support PortSense™ (VL822C0/VL822iC0)

 Supports USB PD Supports USB-C® Industrial-Grade Available

VL823

QFN88 10*10mm (4-Port)
QFN76 9*9mm (4-Port)



SuperSpeed USB 10Gbps Hub with USB-C Support

Native USB-C DFP w/ Mux + CC Logic
* 2x for QFN88, 1x for QFN76
Integrated USB Billboard
Supports HID Buttons
Management Interface & Smart Charging
Low Power Design
Support PortSense™

VL711

QFN48 6x6mm
QFN44 5x6mm

SuperSpeed USB 5Gbps SATA Bridge

SuperSpeed USB 5Gbps to SATA III Bridge
Low Power Design
Built-in DC-DC

VL716

QFN48 6x6mm



SuperSpeed USB 10Gbps SATA Bridge

SuperSpeed USB 10Gbps to SATA III Bridge for USB-C
Integrated CC Logic & Switch Function
Low Power Design
Built-in DC-DC

VL631

QFN48 6x6mm

VL632

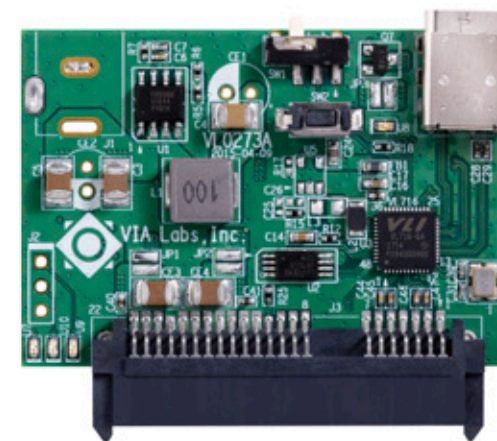
QFN56 7x7mm

USB Audio Controller

Single Chip with USB Audio, Audio Codec & Headphone Amplifier
Integrated Flash & OSC
DAC SNR 100dB, ADC SNR 95dB
Supports Up to 24-bit/192k Hz Resolution
Supports HID Buttons
* VL631 Supports 2 Channel Stereo Playback & 2 Channel Recording
* VL632 Supports 2 Channel Stereo Playback & 4 Channel Recording



VL711



VL716

⚡ Supports USB PD 🛡 Supports USB-C® 🏭 Industrial-Grade Available

VL122i

QFN28 5x5mm (4-Port)
QFN24 4x4mm (2-Port)

**USB2 480Mbps Hub**

Single Transaction Translator (STT)
Integrated 5V to 3.3V regulator
Management the configuration through EEPROM / SMBus
Low Power Design

VL123i

QFN28 5x5mm (4-Port)
QFN24 4x4mm (2-Port)

**USB2 480Mbps Hub**

Multiple Transaction Translators (MTT)
Integrated 5V to 3.3V regulator
Management the configuration through EEPROM / SMBus
Low Power Design

VL819i

QFN88 10*10mm (4-Port)
QFN76 9*9mm (4-Port)

**SuperSpeed USB 5Gbps Hub with USB PD Support**

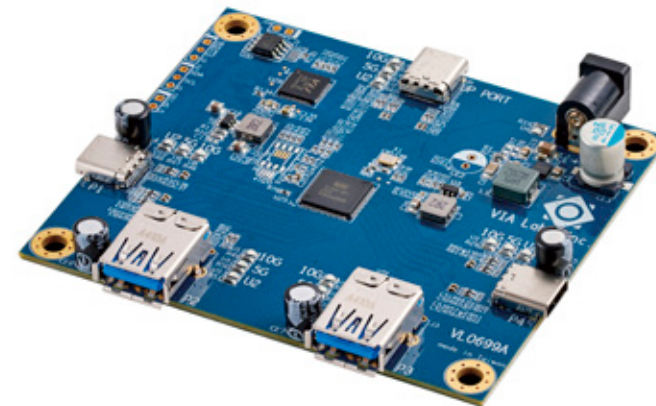
Supports USB-C & USB PD, Up to 5-Ports via TCPCI
Supports Multi-Port Charger & DP Alt-Mode
Integrated USB Billboard
Supports HID Buttons
Management Interface & Smart Charging
Integrated Mux for UFP & 2x DFP (QFN88)
Support PortSense™ (VL819iC0 P2P VL822iC0)

VL822i

QFN88 10*10mm (4-Port)
QFN76 9*9mm (4-Port)

**SuperSpeed USB 10Gbps Hub with USB PD Support**

Supports USB-C & USB PD, Up to 5-Ports via TCPCI
Supports Multi-Port Charger & DP Alt-Mode
Integrated USB Billboard
Supports HID Buttons
Management Interface & Smart Charging
Integrated Mux for UFP & 2x DFP (QFN88)
Support PortSense™ (VL822C0/VL822iC0)



VL822i

⚡ Supports USB PD 🛡️ Supports USB-C® 🛠️ Industrial-Grade Available

CONTACT



威鋒電子股份有限公司 **VIA Labs, Inc.**
231615 新北市新店區中正路529之1號7樓

☎ 886-2-2218-1838

☎ 886-2-2218-2553



CONTACT US

VISION

LEADERSHIP

INTELLIGENCE



www.via-labs.com